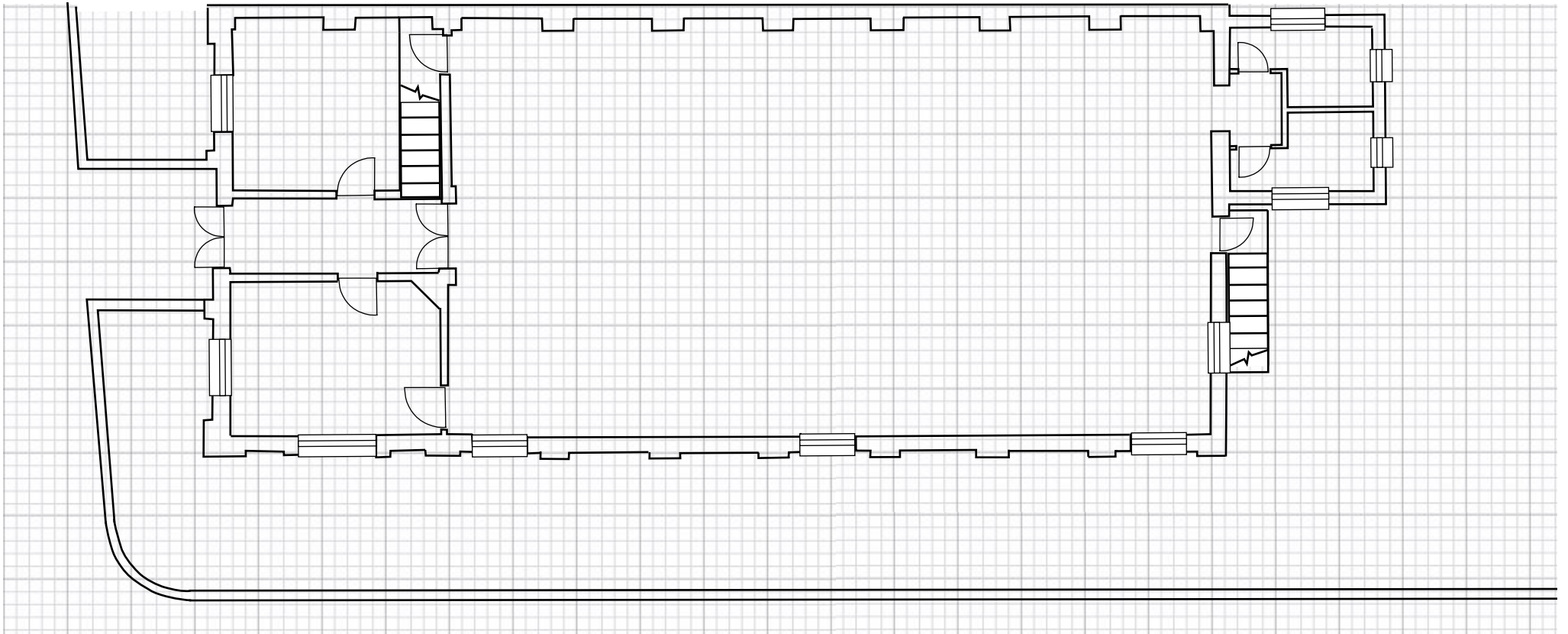


Sidmouth Drill Hall

Ground floor plan taken from drawings given by Property Services In their document 'Assessment of Significance - Sidmouth Former Drill Hall' for East Devon District Council, 29/08/2012 and from measurements given in the newspapers at the time of building.



Each square represents one square foot, approx. The building was constructed in feet so this seems the most appropriate measurement.

For metric conversion, one foot = 30cm/ 300mm, therefore 1 metre is 3.3 squares/ 3 metres = 10 feet